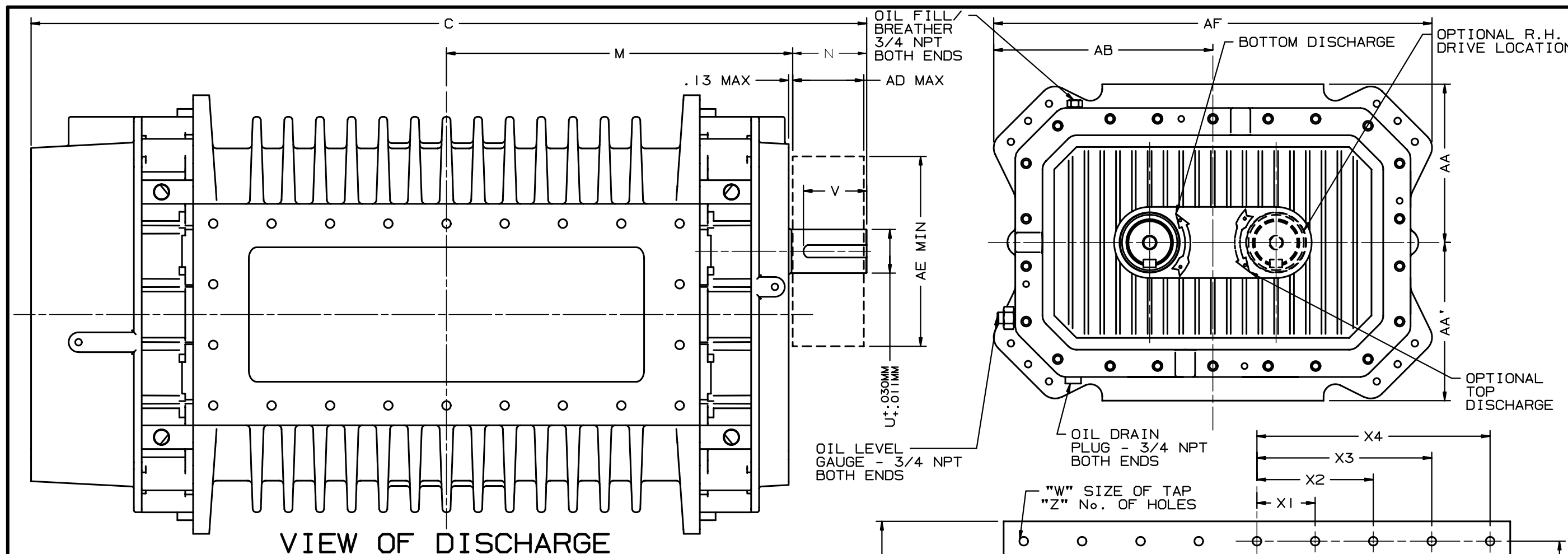


**NOTES:**

1. DRIVE END COVER TO BE PINNED TO HEADPLATE AFTER ALIGNING SEAL BORE TO SHAFT WITHIN .001"
2. USE LOCTITE 567 ON ALL PIPE THREADS
3. APPLY OIL TO BOLT THREADS & UNDER BOLT HEAD AND TORQUE TO 650 FT-LBS. (90KG.M) (IF MOLYKOTE GN PASTE IS USED TORQUE TO 500 FT-LBS.) (70 KG.M)
4. APPLY LOCTITE 272 TO SCREW THREADS & TORQUE TO 450 FT-LBS. (62KG.M)
5. APPLY LOCTITE 272 TO SCREW THREADS & TORQUE TO 25 FT-LBS. (3.5KG.M)
6. APPLY OIL TO SCREW THREADS & TORQUE TO 85 FT-LBS. (11.7KG.M)
7. ITEMS 34 & 54 MUST BE INSTALLED WITH OIL GROOVE AT TOP.
8. INSTALL PER ROTATION
9. OPTIONAL INLET / DISCHARGE ADAPTERS.
10. OPTIONAL FEET

**Assembly of RAM X™ Tri-Lobe Blowers Models 800 & 1000**



VIEW OF DISCHARGE

INLET & DISCHARGE FLANGES TO MATE FLUSH & SQUARE WITH FLAT FACE FLANGE ONLY. USE FULL FACE GASKETS.

V-BELT DRIVEN UNITS: MOTOR TO BE LOCATED ON INLET SIDE OF HORIZONTAL FLOW UNITS & ON DRIVE SHAFT SIDE OF VERTICAL FLOW UNITS.

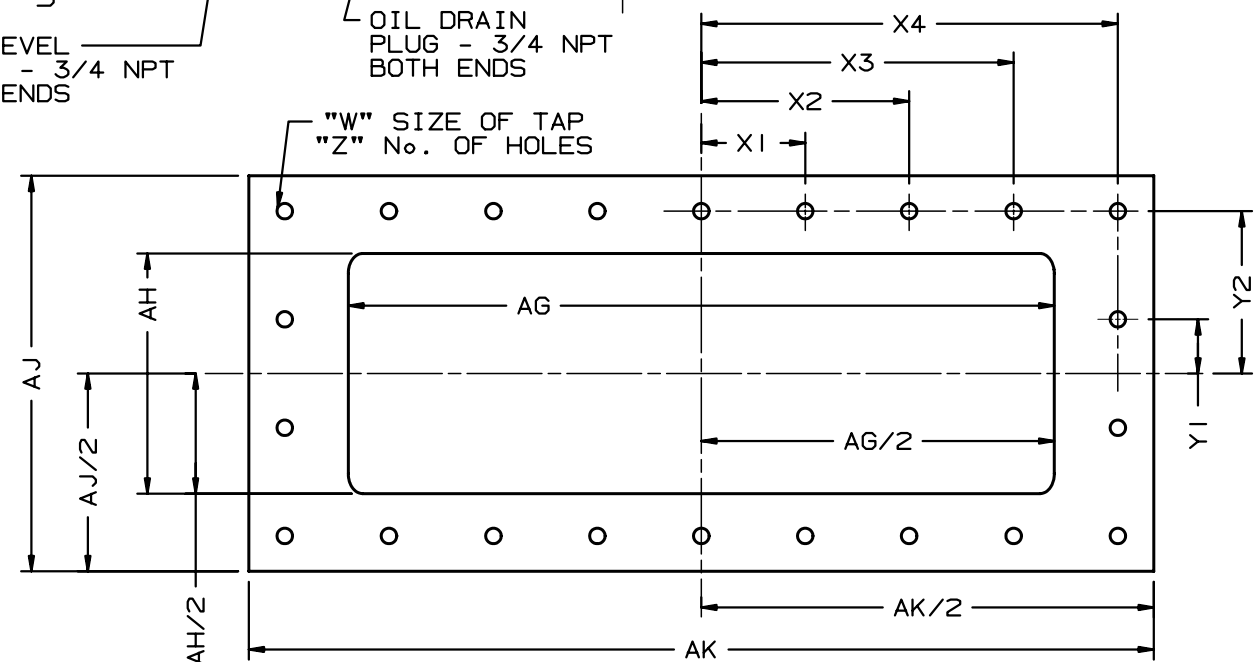
AD - MAXIMUM SHEAVE WIDTH (SEE OVERHUNG LOAD LIMIT K-24102)

AE - MINIMUM SHEAVE DIAMETER (SEE OVERHUNG LOAD LIMIT K-24102)

ALL DIMENSIONS IN INCHES UNLESS OTHERWISE SPECIFIED METRIC DIMENSIONAL #90776021

DISCH. LOCATION	DRIVE LOCATION	
	LH	RH
TOP	CW	CCW
BOTTOM	CCW	CW

UNIT IS BUILT TO CUSTOMERS SPECIFIED ORIENTATION



MODEL	C	M	N	U MM	V MM	KEYWAY MM	INLET AA	DISCH AA'	AB	AD	AE	AF	AG	AH	AJ	AK	JAK	APPROX WEIGHT
800	46.98	18.70	4.94	70.0	102.0	20.0X8.0	10.00	10.00	13.86	7.19	13.20	27.72	20.00	8.50	14.00	26.00	26.00	2000 LBS
1000	52.98	21.71	"	"	"	20.0X8.0	"	"	"	"	"	25.00	"	"	"	32.00	32.00	2500 LBS

MODEL	X1	X2	X3	X4	Y1	Y2	W	Z
800	3.91	7.82	-	11.75	1.92	5.75	M16x2	18
1000	3.68	7.36	11.06	14.75	1.92	5.75	M16x2	22

CERTIFIED CORRECT FOR  
 CUSTOMER ORDER No. \_\_\_\_\_  
 ROOTS ORDER No. \_\_\_\_\_  
 DATE \_\_\_\_\_

REVISIONS	BY	CHANGE NOTICE	CHKD.	APP.	V-BELT DRIVE DATA
					BELTS
					DRIVE SHEAVE
					DRIVEN SHEAVE
					CENTER DISTANCE

RAM X™  
 TRI-LOBE BLOWERS  
 MODELS 800 & 1000



Dresser ROOTS, Dresser, Inc.  
 Connersville, IN USA

DR	CHKD	APP	90775021	REV.
----	------	-----	----------	------

