

10	11	12
REV	PART NAME	DATE

NOTES: A- INSTALL ITEM #20 (SCREW) IN ASSEMBLY

B- SEE OPERATING MANUAL IRB-180 FOR LUBRICATION INSTRUCTION

C- 2-1/2, 3-1/2, & 4" REQ'D SOC. HD. ON G.E. ONLY

E- REQ'D ON 22 & 42 ONLY

F- NUT TO BE TORQUED TO:

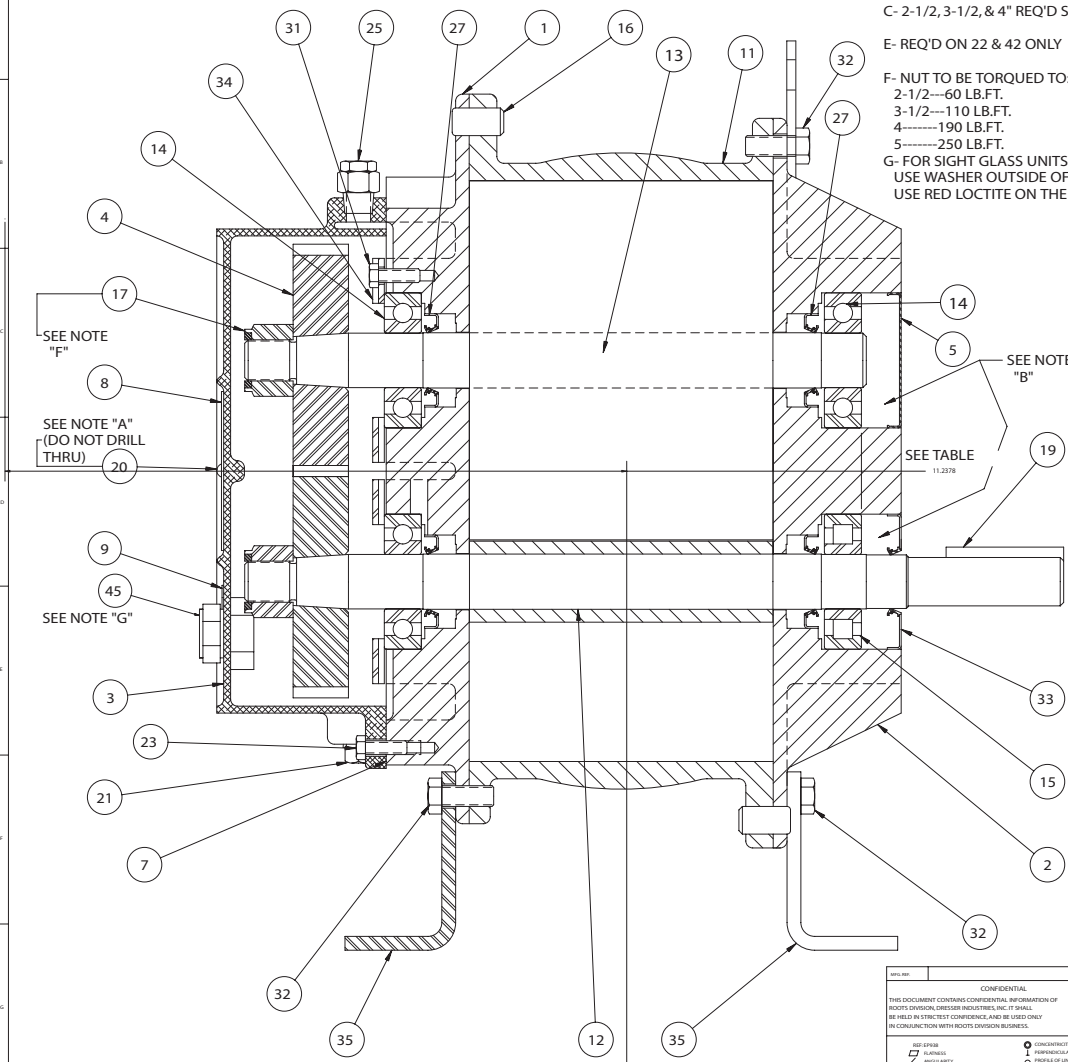
2-1/2---60 LB.FT.

3-1/2---110 LB.FT.

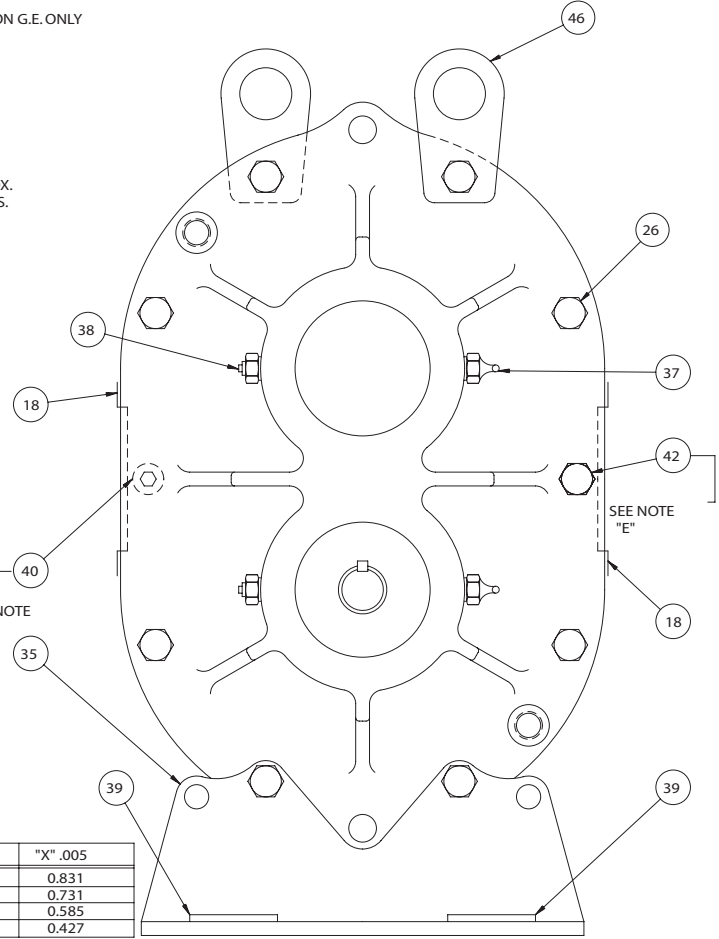
4---190 LB.FT.

5---250 LB.FT.

G- FOR SIGHT GLASS UNITS ONLY. USE WASHER OUTSIDE OF GEARBOX. USE RED LOCTITE ON THE THREADS.



SIZE	"X" .005
5	0.831
4	0.731
3-1/2	0.585
2-1/2	0.427



CONFIDENTIAL
THIS DOCUMENT CONTAINS CONFIDENTIAL INFORMATION OF ROOTS DIVISION, DRESSER INDUSTRIES, INC. IT SHALL BE HELD IN STRICTEST CONFIDENCE AND BE USED ONLY IN CONNECTION WITH ROOTS DIVISION BUSINESS.

J	ADD LIFTING LUG ITEM #6	RE	B155	T1-22	ACP				
H	ADD ITEM #4 FOR SIGHT GLASS UNITS	RE	B155	BR47	ACP				
G	DELETED ITEM #1	VC	0001	T-5-1					
F	REVISED PER ECN	JHB	1105	1804-V					
E	INCREASED GEAR NUT TORQUE	JHB	1108	1572V	FCR	AP	1000	MM	1.5-16
D	ITEM #5 REVISED PER ECN	REM	07	3539V					
C	LUBRICATION NOTE B REVISED	REM	02		FCR	AP	1000	AP	1.2-16
B	ITEM #43 MOVED	DR	1108		FCR				
A	REV PER ECN	RM	02-26		FCR	AP	1000	AP	1.2-16

DO NOT SCALE FOR DIMENSIONS
ALL DIMENSIONS UNLESS SPECIFIED ARE IN INCHES

SECTIONAL ASSEMBLY
2-1/2 THRU 5" U-RAI BLOWERS
TAPER BORE GEARS

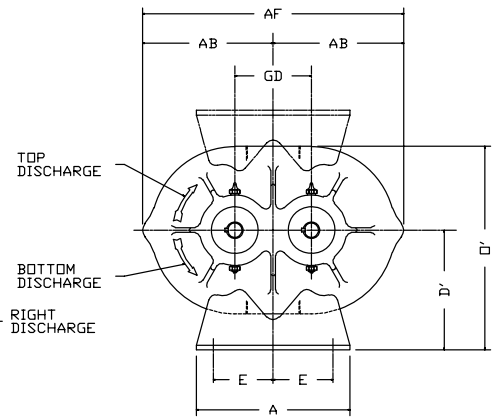
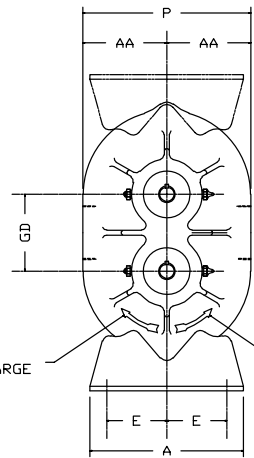
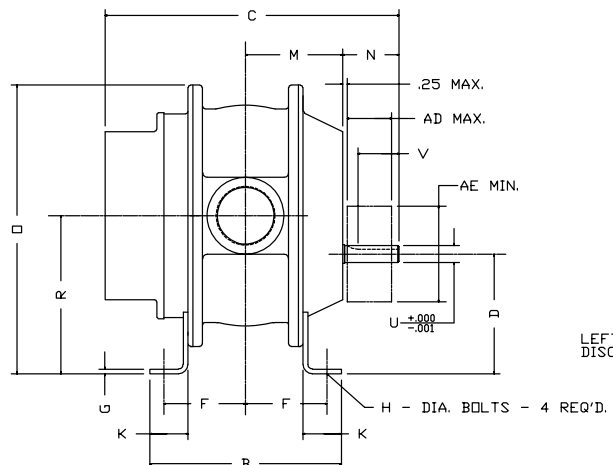
DRESSER
Roots
DRESSER ROOTS, DRESSER, INC.
HOUSTON, TX

64720023 REV J

Assembly of UNIVERSAL RAI Series, Air Blowers, 2-1/2" Through 5" Gear Diameter

FRAME	APPROX. OIL CAPACITY	
	VERTICAL	HORIZONTAL
2-1/2	3.4 FL. OZ.	6.1 FL. OZ.
3-1/2	8.5 FL. OZ.	16 FL. OZ.
4	12.7 FL. OZ.	22.8 FL. OZ.
5	16.0 FL. OZ.	27.6 FL. OZ.

No. REQ'D.	PART NAME	PATT. No. PART No.	MAT'L.



W - INLET & DISCHARGE
 AD - SHEAVE WIDTH
 AE - SHEAVE DIAMETER

ALL DIMENSIONS IN INCHES

UNIVERSAL[®] RAI BLOWER

FRAME SIZE	GD	A	B	C	D	D'	E MIN.	E MAX.	F MIN.	F MAX.	G	H	K	M	N	Ø	Ø'	P	R	U	KEYWAY	W NPT.	V	AA	AB	AD	AE	AF	APPROX. WT. LBS
22	2.5	5.13	5.00	9.75	3.75	3.75	1.50	2.00	2.00	2.00	.25	.38	1.25	2.63	2.50	9.63	6.88	6.25	5.00	.625	.188x.094	1"	1.81	3.13	4.63	1.75	4.00	9.25	32
24			7.00	11.75					3.00	3.00				3.63							2"							43	
32	3.50	7.25	6.75	11.25	5.00	5.00	2.50	2.88	2.56	2.81	.25	.44	1.75	3.38	2.44	12.81	8.88	7.75	6.75	.750	.188x.094	1-1/4"	1.63	3.88	6.06	1.91	5.00	12.13	69
33			7.63	12.13					3.00	3.25				3.81							2"							74	
36			10.00	14.63					4.18	4.44				5.00	2.56						2-1/2"	1.75						102	
42	4.00	8.00	7.25	13.00	6.25	6.25	3.00	3.13	2.50	3.13	.31	.44	2.00	3.68	3.18	15.06	10.63	8.75	8.25	.875	.188x.094	1-1/2"	2.31	4.38	6.81	2.31	5.00	13.63	88
45			10.00	15.50					3.56	4.25				5.06	2.94						2-1/2"	2.13						109	
47			11.75	17.63					4.63	5.38				5.94	3.31		10.50	8.50			3"	2.50	4.25					128	
53	5.00	10.50	8.38	15.38	6.25	6.75	3.50	3.50	3.18	3.68	.25	.50	1.88	4.50	3.68	17.38	11.88	10.25	8.75	1.125	.25 x.125	2-1/2"	2.75	5.13	8.63	3.06	6.00	17.25	143
56			11.00	17.50					4.25	5.00				5.81	3.38		12.25	11.00			4"	2.50	5.50					170	
59			14.00	21.00					6.00	6.50				7.31	3.88						4"	3.00						204	

MFG. REF.	CONFIDENTIAL	DATE	8/29/84
THIS DOCUMENT CONTAINS CONFIDENTIAL INFORMATION OF ROOTS DIVISION, DRESSER INDUSTRIES, INC. IT SHALL BE HELD IN STRICTEST CONFIDENCE, AND BE USED ONLY IN CONJUNCTION WITH ROOTS DIVISION BUSINESS.	DR. DB	CHKD.	
REF: EP938	CONCENTRICITY	APP. FCR	
□ FLATNESS	⊥ PERPENDICULARITY	DBV	
∠ ANGULARITY	— PROFILE OF LINE	SCALE	
// PARALLELISM	⊖ PROFILE OF A SURFACE	CAD FILE / DIRECTORY	
⊕ TRUE POSITION	∅ DIAMETER		
— STRAIGHTNESS	✓ FINISH IN MICRO INCHES / PARTS/XXAD 62795021		
	REVISIONS	BY	DATE
		CHANGE NOTICE	CHKD.
			APP

DO NOT SCALE FOR DIMENSIONS
 ALL DIMENSIONS SHOWN IN BRACKETS () ARE MILLIMETERS

ORDER No.

ASSY DIM 22-59 URAI VH

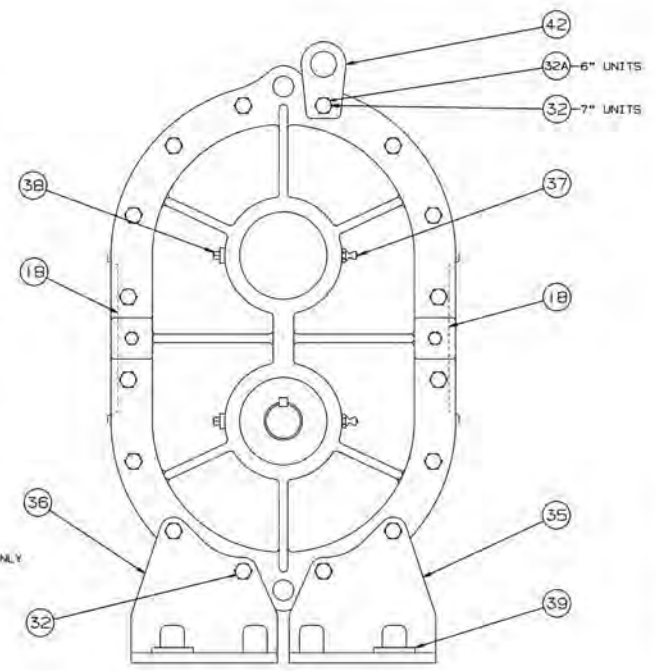
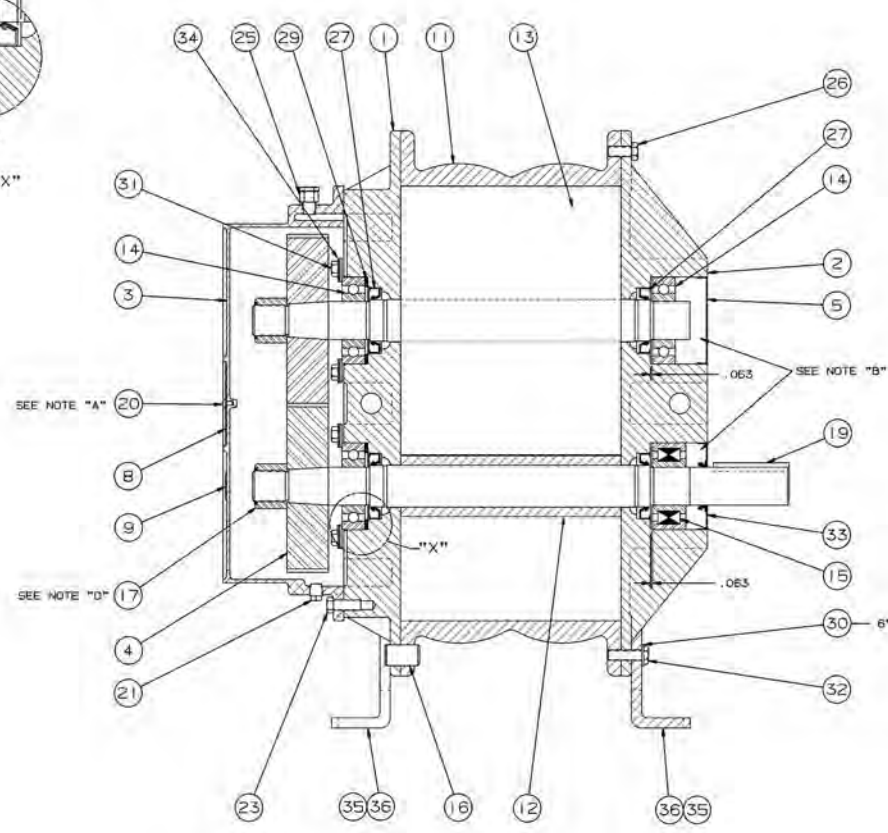
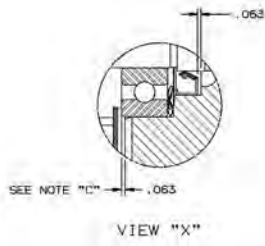
ROOTS DIVISION
 DRESSER EQUIPMENT GROUP
 A HALLIBURTON COMPANY
 CONNERSVILLE, IN USA

DIMENSIONAL TOLERANCES UNLESS OTHERWISE SPECIFIED
 FINISHED DIMENSIONS
 TWO PLACE DECIMALS 000--0.015 FRACTIONAL--1/64
 THREE PLACE DECIMALS 0000--0.005

62795021

REV E

REV.	PART NAME	QTY.	MAT'L.
------	-----------	------	--------



- NOTES
- A INSTALL ITEM #20 (SCREW) IN ASSEMBLY
 - B SEE OPERATING MANUAL IRB-103 FOR LUBRICATION INSTRUCTION
 - C INSTALL BEARINGS AS SHOWN BEFORE SETTING END CLEARANCE
 - D NUT TO BE TORQUED TO:
6"---400 LB. FT.
7"---550 LB. FT.

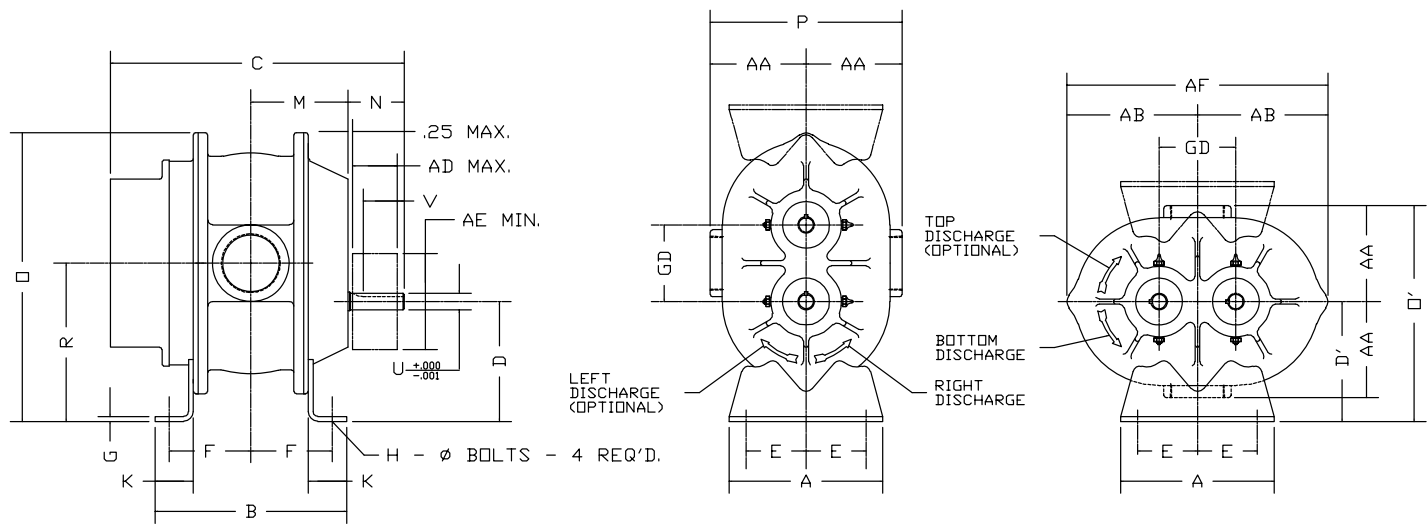
- ① 35779
- ② 33862V
- ③ 35500V

REV. NO.		CONFIDENTIAL		DATE		DO NOT SCALE FOR DIMENSIONS		PART NO.	
THIS DOCUMENT CONTAINS CONFIDENTIAL INFORMATION OF ROOTS DIVISION, DRESSER INDUSTRIES, INC. IT SHALL BE HELD IN STRICTEST CONFIDENCE, AND BE USED ONLY IN CONNECTION WITH ROOTS DIVISION BUSINESS.		REV. 1030 10/98		REV. 1030 10/98		ALL OPERATING PARTS TO PROTECT IT OR EQUIPMENT		64792023	
REV. 1030 10/98		CONFIDENTIAL		REV. 1030 10/98		SECTIONAL ASSEMBLY		ROOTS DIVISION	
REV. 1030 10/98		CONFIDENTIAL		REV. 1030 10/98		FOR 6" & 7" M-BALL BLOWERS		DRESSER EQUIPMENT GROUP	
REV. 1030 10/98		CONFIDENTIAL		REV. 1030 10/98		WITH TAPER SHAFT P.T.		A HALLIBURTON COMPANY	
REV. 1030 10/98		CONFIDENTIAL		REV. 1030 10/98		DRESSER ROOTS		HOUSTON, TX USA	
REV. 1030 10/98		CONFIDENTIAL		REV. 1030 10/98		64792023		64792023	
REV. 1030 10/98		CONFIDENTIAL		REV. 1030 10/98		REV. 1030 10/98		REV. 1030 10/98	

Assembly of UNIVERSAL RAI Blowers, 6" and 7" Diameter

FRAME	APPROX. OIL CAPACITY	
	VERTICAL	HORIZONTAL
3-1/2	8.5 FL. OZ.	16 FL. OZ.
4	12.7 FL. OZ.	22.8 FL. OZ.
5	16.0 FL. OZ.	27.6 FL. OZ.

No. REQ'D.	PART NAME	PATT. No. PART No.	MAT'L.



W - INLET & DISCHARGE
 AD - SHEAVE WIDTH
 AE - SHEAVE DIAMETER

ALL DIMENSIONS IN INCHES

UNIVERSAL RAI-J WHISPAIR BLOWER

FRAME SIZE	GD	A	B	C	D	D'	E MIN.	E MAX.	F MIN.	F MAX.	G	H	K	M	N	O	O'	P	R	U	KEYWAY	W NPT.	V	AA	AB	AD	AE	AF	APPROX. WT. LBS
33	3.50	7.25	7.63	12.13	5.00	5.00	2.50	2.88	3.00	3.25	.25	.44	1.75	3.81	2.44	12.81	10.00	10.00	6.75	.750	.188x.094	2"	1.63	5.00	6.06	1.91	5.00	12.13	84
36			10.00	14.63					4.18	4.44				5.00	2.56		10.50	11.00			2-1/2"	1.75	5.50						112
45	4.00	8.00	10.00	15.50	6.25	6.25	3.00	3.13	3.56	4.25	.31	.44	2.00	5.06	2.94	15.06	12.25	12.00	8.25	.875	.188x.094	2-1/2"	2.13	6.00	6.81	2.31	5.00	13.63	119
47			11.75	17.63					4.63	5.38				5.94	3.31		12.00				3"	2.50	6.00						138
56	5.00	10.50	11.00	17.50	6.25	6.75	3.50	3.50	4.25	5.00	.25	.50	1.88	5.81	3.38	17.38	14.00	14.50	8.75	1.125	.25x.125	4"	2.50	7.25	8.63	3.06	6.00	17.25	180

MFG. REF. _____ DATE _____

DR. JHB 9/25/92

CHKD. _____

APP. _____

DBV _____

SCALE _____

CAD FILE / DIRECTORY _____

REF: EP938

⊖ FLATNESS

∠ ANGULARITY

// PARALLELISM

⊕ TRUE POSITION

— STRAIGHTNESS

⊙ CONCENTRICITY

⊥ PERPENDICULARITY

⌒ PROFILE OF LINE

⌒ PROFILE OF A SURFACE

∅ DIAMETER

✓ FINISH IN MICRO INCHES /PARTS/XXAD

C REVISION ON 'C' FROM 18.00 TO 17.50 VC 12/07/00 T34

B ADDED FEET BMS 1/31/94

A REMOVED @ REM 12/11/92

REVISIONS BY DATE CHANGE NOTICE CHKD. APP

DO NOT SCALE FOR DIMENSIONS
 ALL DIMENSIONS SHOWN IN BRACKETS () ARE MILLIMETERS

ORDER No. _____

ASSY DIM URAI J
 33,45, 56 URAI

DRESSER ROOTS

ROOTS DIVISION
 DRESSER EQUIPMENT GROUP
 A HALLIBURTON COMPANY
 CONNERSVILLE, IN USA

DIMENSIONAL TOLERANCES UNLESS OTHERWISE SPECIFIED

FINISHED DIMENSIONS

TWO PLACE DECIMALS 0000-4005 FRACTIONAL--11/64

THREE PLACE DECIMALS 0000-4005 73959021

73959021

REV C