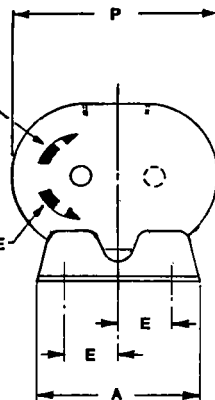


TOP DISCHARGE

BOTTOM DISCHARGE



NOTE:
UNIVERSAL RAI

- 45 & 56 U-RAI WILL HAVE TO RUN AT REDUCED SPEED TO DUPLICATE AF PERFORMANCE.
- LARGER STANDARD SHAFT THAN AF. SEE DIMENSION "U".
- U-RAI INLET & OUTLET CONNECTIONS ARE LARGER THAN AF ON THE FOLLOWING SIZES: 24, 45, 47, 56 & 59. SEE DIMENSION "W".
- 45 U-RAI REPLACES 44 AF. 56 U-RAI REPLACES 55 AF.
- FOR ADDITIONAL INFORMATION CONTACT YOUR SALES REPRESENTATIVE OR THE FACTORY.

W-INLET & DISCHARGE

ALL DIMENSIONS IN INCHES

DIMENSIONS NOT CERTIFIED FOR CONSTRUCTION

FRAME SIZE	A	B	C	D	E	F	H	M	N	O	P	U	V	KEYWAY	W
22 U-RAI	5.13	5.00	9.75	3.75	2.00	2.00	3/8	2.63	2.50	6.88	9.25	.625	1.81	3/16 x 3/32	1" NPT
22 AF	5.50	5.06	9.13	3.75	2.00	2.00	3/8	2.63	1.94	6.88	9.25	.5875	1.31	3/16 x 3/32	1" NPT
24 U-RAI	5.13	7.00	11.75	3.75	2.00	3.00	3/8	3.63	2.50	6.88	9.25	.625	1.81	3/16 x 3/32	2" NPT
24 AF	5.50	7.06	11.13	3.75	2.00	3.00	3/8	3.63	1.94	6.88	9.25	.5875	1.31	3/16 x 3/32	1-1/2" NPT
33 U-RAI	7.25	7.63	12.13	5.00	2.88	3.00	3/8	3.81	2.44	8.88	12.13	.750	1.63	3/16 x 3/32	2" NPT
33 AF	7.25	7.44	12.56	5.00	2.88	3.00	3/8	3.81	2.63	8.88	12.13	.6562	1.68	3/16 x 3/32	2" NPT
36 U-RAI	7.25	10.00	14.63	5.00	2.88	4.18	3/8	5.00	2.56	8.88	12.13	.750	1.75	3/16 x 3/32	2-1/2" NPT
36 AF	7.25	9.81	14.94	5.00	2.88	4.18	3/8	5.00	2.63	8.88	12.13	.6562	1.88	3/16 x 3/32	2-1/2" NPT
42 U-RAI	8.00	7.25	13.00	6.25	3.13	2.94	3/8	3.68	3.18	10.63	13.63	.875	2.31	3/16 x 3/32	1-1/2" NPT
42 AF	8.25	7.13	12.88	6.25	3.13	2.94	3/8	3.68	3.00	10.63	13.63	.7812	2.38	3/16 x 3/32	1-1/2" NPT
45 U-RAI	8.00	10.00	15.50	6.25	3.13	3.56	3/8	5.06	2.94	10.63	13.63	.875	2.13	3/16 x 3/32	2-1/2" NPT
44 AF	8.25	8.83	14.13	6.25	3.13	3.56	3/8	4.31	3.00	10.63	13.63	.7812	2.38	3/16 x 3/32	2" NPT
47 U-RAI	8.00	11.75	17.63	6.25	3.13	5.18	3/8	5.94	3.31	10.50	13.63	.875	2.50	3/16 x 3/32	3" NPT
47 AF	8.25	11.63	17.38	6.25	3.13	5.18	3/8	5.94	3.00	10.63	13.63	.7812	2.30	3/16 x 3/32	2-1/2" NPT
53 U-RAI	10.50	8.38	15.38	6.75	4.25	3.69	3/8	4.50	3.68	11.88	17.25	1.125	2.75	1/4 x 1/8	2-1/2" NPT
53 AF	10.75	8.81	15.44	6.75	4.25	3.69	3/8	4.50	3.63	12.00	17.25	.9687	2.88	1/4 x 1/8	2-1/2" NPT
56 U-RAI	10.50	11.00	18.00	6.75	4.25	4.25	3/8	5.81	3.38	12.25	17.25	1.125	2.50	1/4 x 1/8	4" NPT
55 AF	10.75	9.81	16.56	6.75	4.25	4.25	3/8	5.06	3.63	12.00	17.25	.9687	2.88	1/4 x 1/8	2-1/2" NPT
59 U-RAI	10.50	14.00	21.18	6.75	4.25	6.50	3/8	7.31	3.38	12.25	17.25	1.125	3.00	1/4 x 1/8	4" NPT
59 AF	10.75	14.31	21.06	6.75	4.25	6.50	3/8	7.31	3.63	12.00	17.25	.9687	2.88	1/4 x 1/8	3" NPT

PRINTED IN U.S.A.



DRESSER INDUSTRIES, INC.
ROOTS OPERATIONS
900 WEST MOUNT STREET,
CONNERSVILLE, INDIANA 47331

COMPARING ROOTS UNIVERSAL RAI®
TO ROOTS AF

DB 1-7-85

863-813-021

Major Changes when Replacing AF with UNIVERSAL RAI® Blower

Size & Type	Sheave Bushing Dia.	Inlet Size	Disch. Size	Mounting Feet
22 UNIVERSAL RAI®	.625"	1"	1"	Interchangeable
22 AF	.5875"	1"	1"	
24 UNIVERSAL RAI®	.625"	2"	2"	Interchangeable
24 AF	.5875"	1½"	1½"	
32 UNIVERSAL RAI®	.750"	1¼"	1¼"	Special Feet
315 AF	.6562"	¾"	¾"	
33 UNIVERSAL RAI®	.750"	2"	2"	Interchangeable
33 AF	.6562"	2"	2"	
36 UNIVERSAL RAI®	.750"	2½"	2½"	Interchangeable
36 AF	.6562"	2½"	2½"	
42 UNIVERSAL RAI®	.875"	1½"	1½"	Interchangeable
42 AF	.7812"	1½"	1½"	
45 UNIVERSAL RAI®	.875"	2½"	2½"	Reverse Feet
44 AF	.7812"	2"	2"	
47 UNIVERSAL RAI®	.875"	3"	3"	Interchangeable
47 AF	.7812"	2½"	2½"	
53 UNIVERSAL RAI®	1.250"	2½"	2½"	Special Feet
53 AF	.9687"	2½"	2½"	
56 UNIVERSAL RAI®	1.250"	4"	4"	Special Feet
55 AF	.9687"	2½"	2½"	
59 UNIVERSAL RAI®	1.250"	4"	4"	Special Feet
59 AF	.9687"	3"	3"	

*To maintain AF performance with UNIVERSAL RAI®, the blower speed will have to be reduced by sheave change. See Fig. 15 drawing for your specific blower size.

CAUTION CAUTION CAUTION

MAKE CERTAIN THAT THE BREATHER IS LOCATED ON TOP AND THE DRAIN PLUG IN THE BOTTOM OF THE GEAR BOX.